









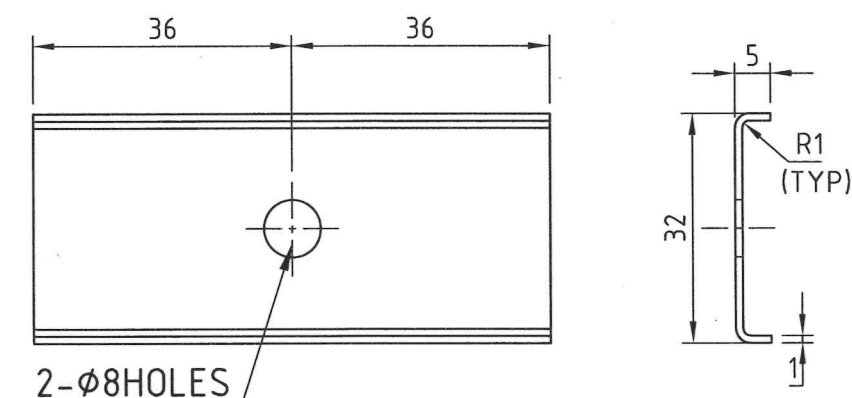
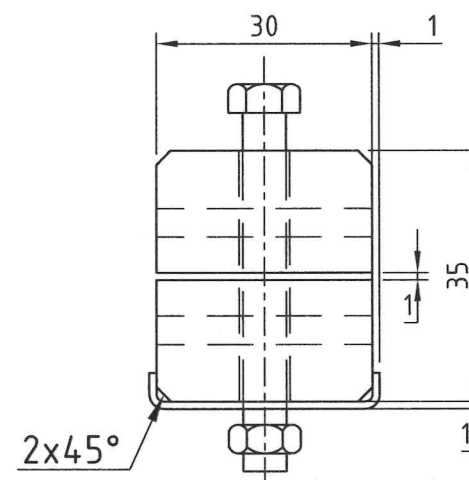
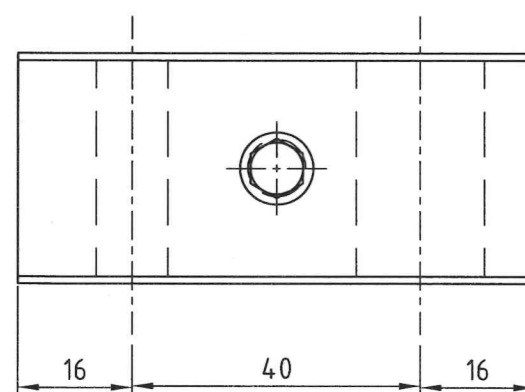


GRADE No.	N12	N11	N10	N9	N8	N7	N6	N5	N4	N3	N2	N1
VALUE	50	25	12.5	6.3	3.2	1.6	0.8	0.4	0.2	0.1	0.05	0.025
SYMBOL												

Technical drawing of a mechanical assembly. The drawing shows a cross-section of a component with a central vertical hole. The total width is 72, divided into two 36 segments. The central hole has a diameter of  $\phi 10$ . The outer hole has a diameter of  $\phi 18$ . The drawing is labeled with circled numbers 1, 2, 3, 4, and 5, indicating different parts or features. Dimension lines indicate a total width of 72, split into two 36 segments.



DETAIL P2



1. NYLOCK SHALL BE APPLIED TO ALL BOLTS FOR LOCK TIGHT.
2. FIRST REMOVAL PREVAILING TORQUE OF NYLOCK IS 4.5 (kg.cm) FOR M6 BOLT.
3. NYLON 6 GRADE 1011SW SHALL COMPLY TO FIRE STANDARD EN45545 HL3

5	1	RFW0920616	SPRING WASHER	B6 TO IS.3063-94 / MATL.AISI.304				
4	1	RFN3860652	HEXAGONAL HEAD NUT	M6 TO IS.1364(PT-3)-02/MATL. IS.3506-79, Gr-A2-70				
3	1	RFB3850650	HEXAGONAL FLANGE BOLT	M6X50 WITH NYLOCK BLUE PATCH PREAPPLIED ADHESIVE TO IS:1364(PT-1)-02/MATL:IS:1367(PT-14)-84, GR-A2-70				
2	1		PLATE			SUS304		
1	1 SET		CLEAT			SEE NOTE 3		
SL.No.	QTY	PART / STOCK No.	DESCRIPTION	SIZE	COMPANY STD./I.S		Wt. (Kg)	
					MATERIAL			
			PRODUCT	MUMBAI METRO CARS L2 & L7				
			REF DRG					
			MATERIAL					
			HEAT TREAT.	APPD	MS		31.01.2020	
			SURFACE TREAT.	REVD	MS		31.01.2020	
			TITLE	CHKD	SK		31.01.2020	
			CLEAT (D10xD18)(P40)	DRWN	MR		31.01.2020	
				SCALE		SHEET	Wt.(Kg)	
				1:1		1 OF 1	-	
ALT.NO.	ECN NO/CHANGES	DATE	BY	CHKD	APPD	DRG No.		
						525-60087		
BEM LIMITED						ALT		